

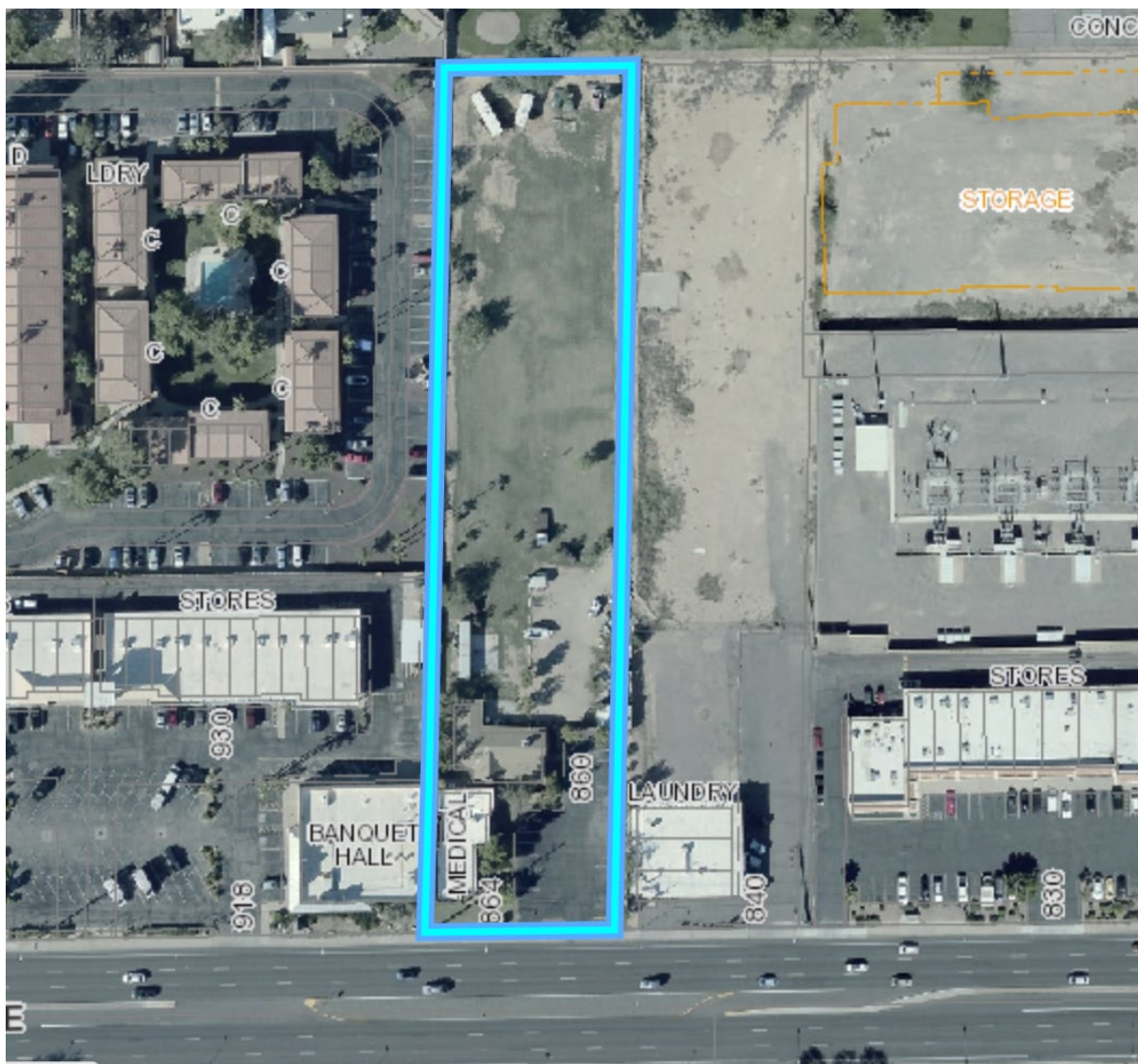


**DRB20-00203**

# Location

- North of Southern Avenue
- West of Extension Road
- 864 W Southern Avenue





## Request

---

- Design Review

## Purpose

---

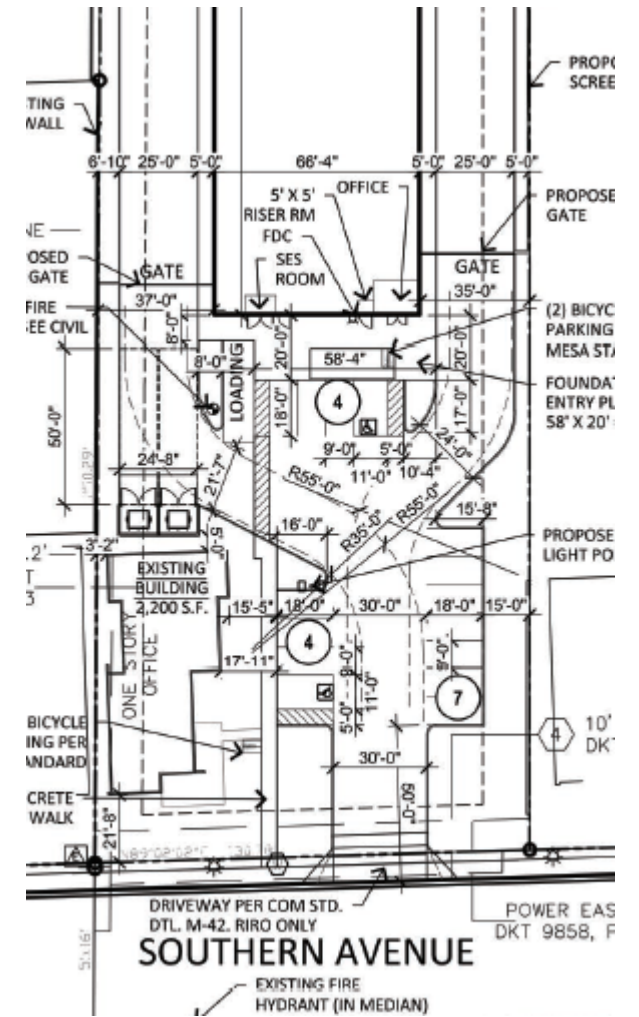
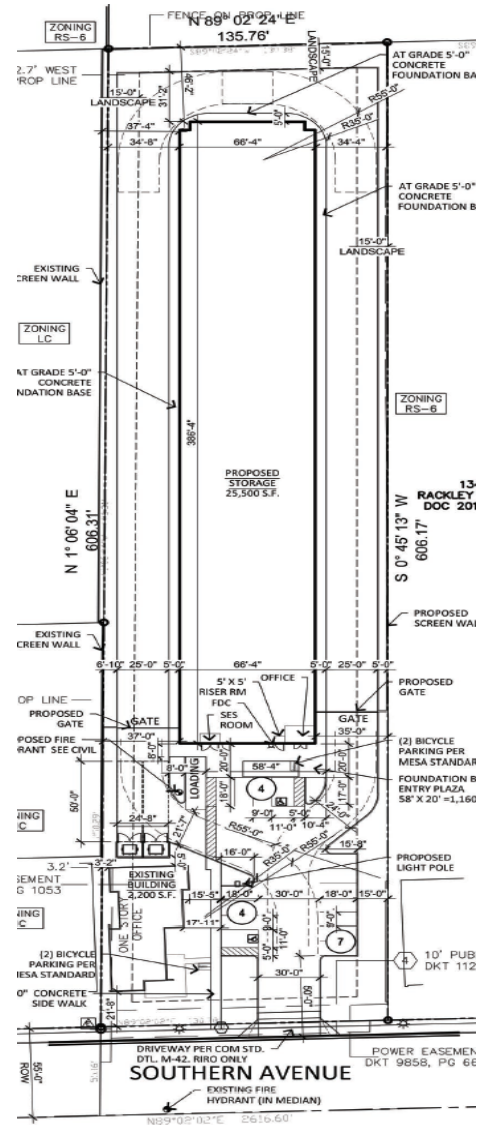
- Modify exterior elevations for medical office building
- Proposed self storage facility

# Street View

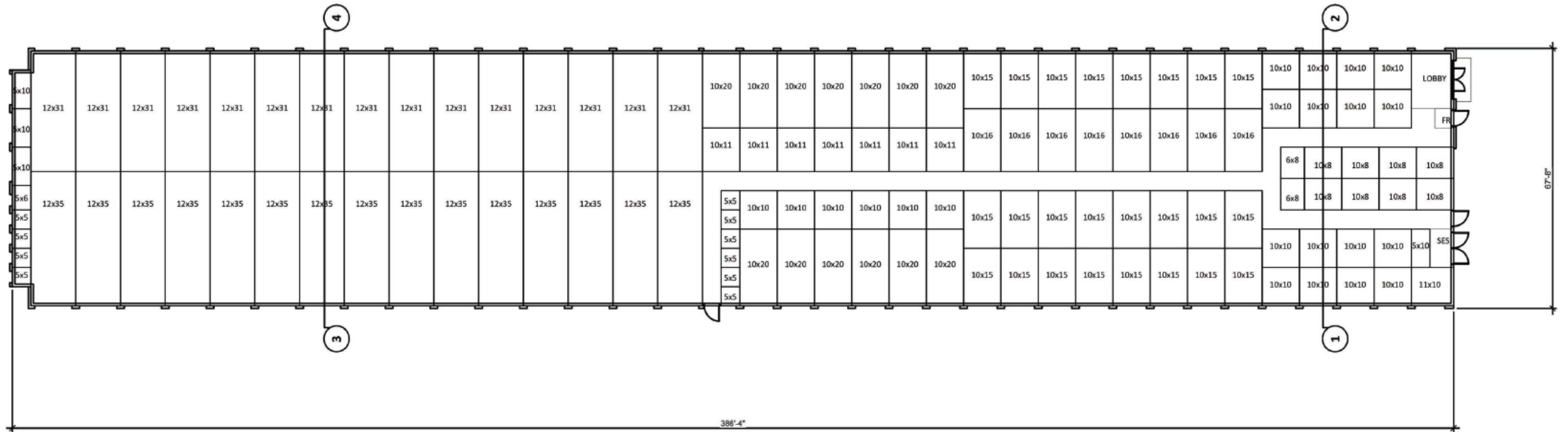


# Site Plan

- Demo of house
- Existing medical office
- Proposed self-storage









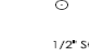


# Floor Plan



# Landscape Plan

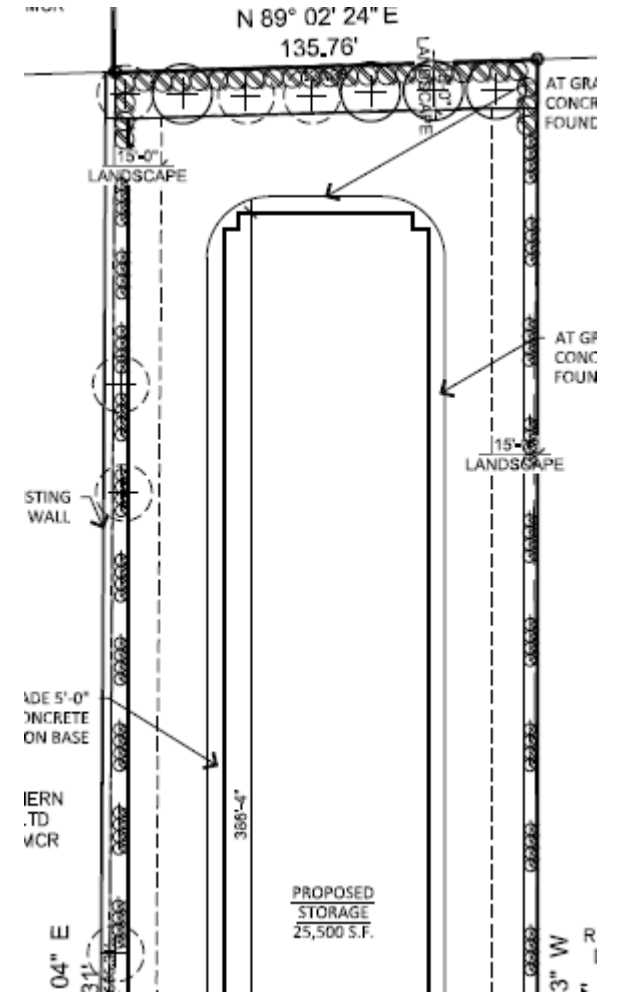
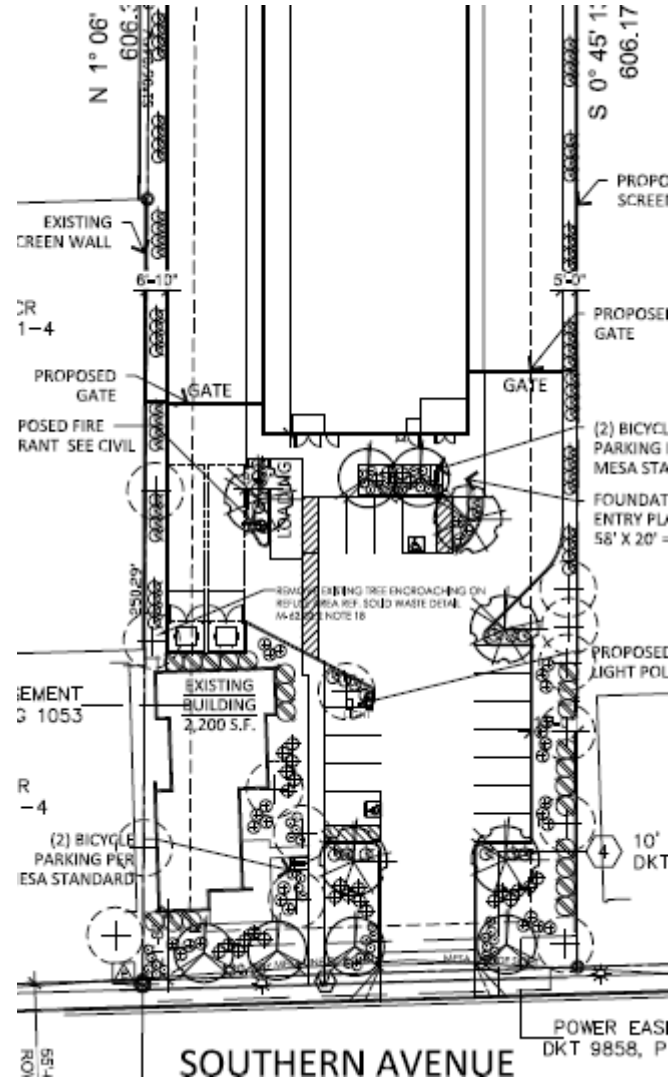
## LANDSCAPE LEGEND

-  CERCIDIUM 'HYBRID'  
DESERT MUSEUM PALO VERDE  
24" BOX
-  ACACIA SALICINA  
WILLOW ACACIA  
24" BOX
-  QUERCUS VIRGINIANA  
LIVE OAK  
2" CALIF., 7T, 4"W
-  EXISTING TREE  
PROTECT FROM  
CONSTRUCTION
-  TECOMA 'ORANGE JUBILEE'  
ORANGE JUBILEE  
5 GALLON
-  HESPERALOE PARVIFLORA  
RED YUCCA  
5 GALLON
-  MUHLENBERGIA RIGENS  
DEER GRASS  
5 GALLON
-  RUELLIA PENINSULARIS  
BAJA RUELLIA  
5 GALLON
-  LANTANA MONTEVIDENSIS  
'GOLD MOUND'  
1 GALLON

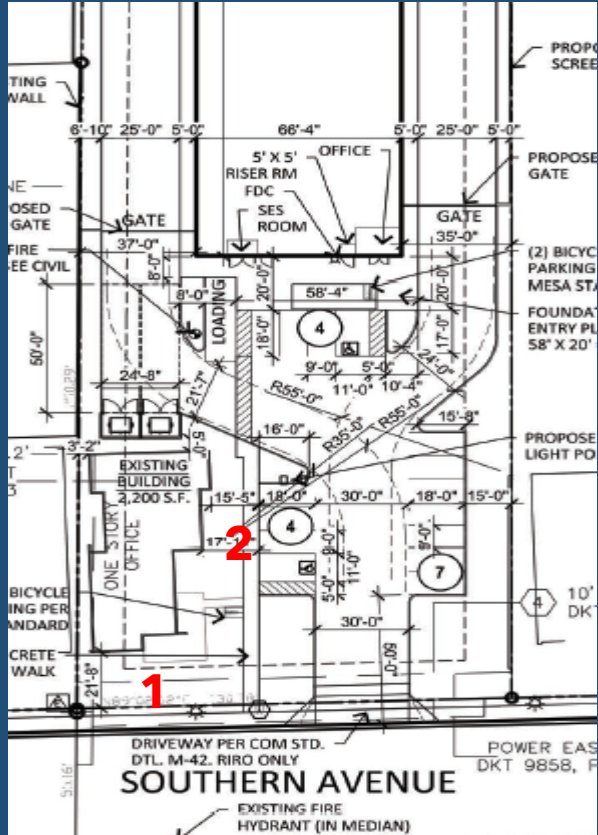
1/2" SCREENED SADDLEBACK BROWN  
DECOMPOSED GRANITE  
2" DEPTH IN ALL LANDSCAPE AREAS

### LANDSCAPE DATA:

SITE AREA: 79,845 SQ. FT.  
 OFF-SITE LANDSCAPE AREA: 331 SQ. FT.  
 REQ. ON-SITE LANDSCAPE AREA: 11,977 SQ. FT. (15%)  
 PROVIDED ON-SITE LANDSCAPE AREA: 22,670 SQ. FT. (28%)  
 REQ. PARKING LOT LANDSCAPE: 478 SQ. FT. (10%)  
 PROVIDED PARKING LOT LANDSCAPE: 720 SQ. FT. (15%)  
 REQ. FRONT L/S SET BACK: 15'  
 PROVIDED FRONT L/S SET BACK: 15'  
 REQ. SIDE L/S SET BACK: 15'  
 PROVIDED SIDE L/S SET BACK: 15'  
 REQ. REAR L/S SET BACK: 5' NO TREES, SHRUBS ONLY  
 REQ. REAR L/S SET BACK: 15'  
 PROVIDED REAR L/S SET BACK: 15'

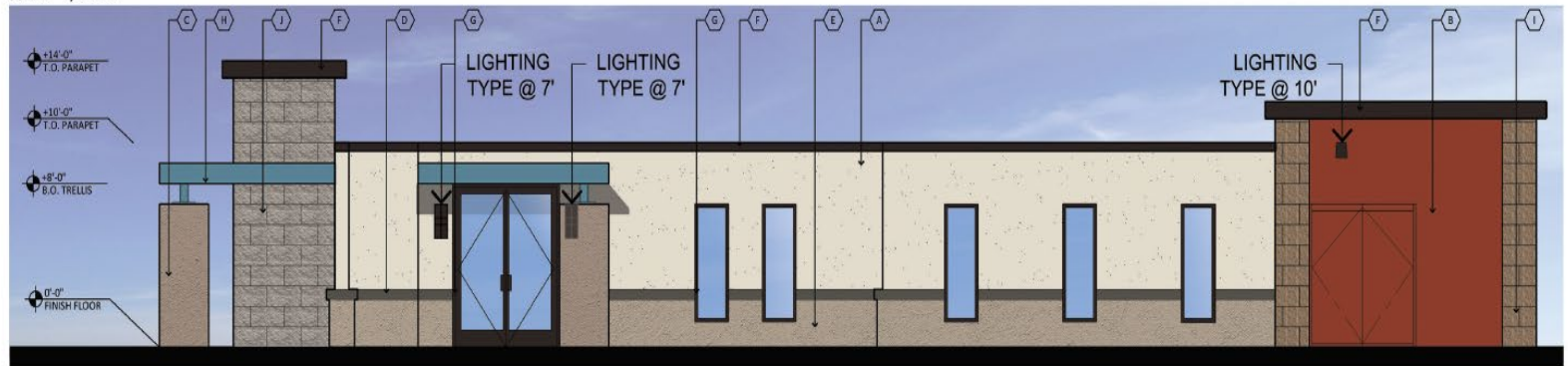


# Elevations



PROPOSED SOUTH ELEVATION 1

SCALE: 1/4"=1'-0"



PROPOSED EAST ELEVATION 2

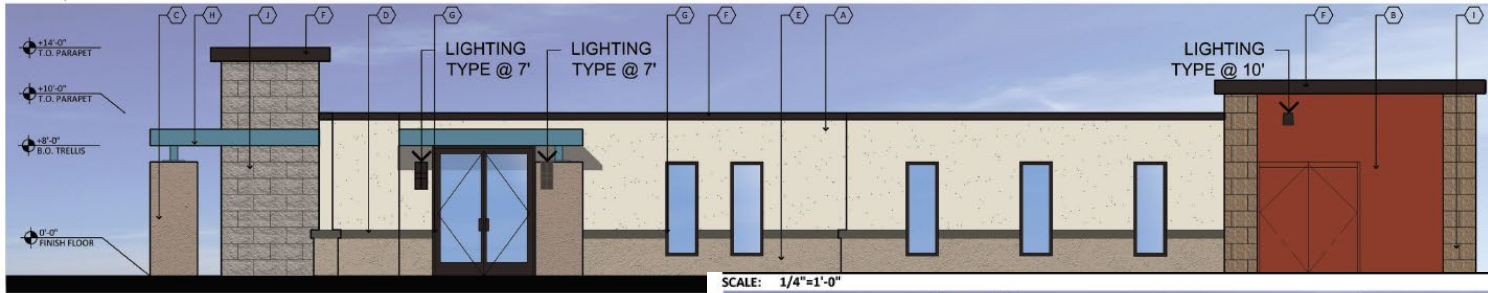
SCALE: 1/4"=1'-0"





**PROPOSED SOUTH ELEVATION**

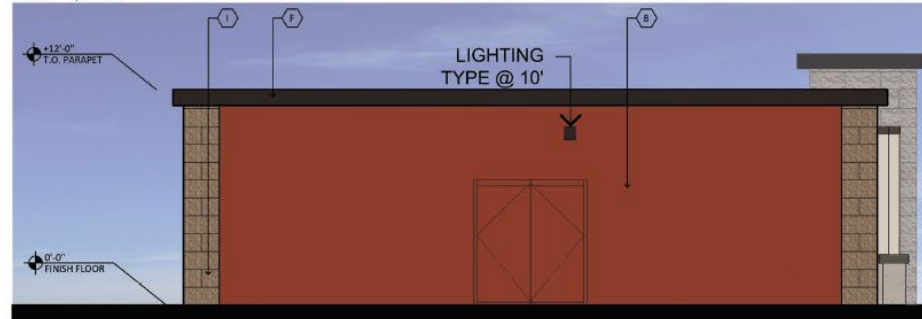
SCALE: 1/4"=1'-0"



**PROPOSED EAST ELEVATION**

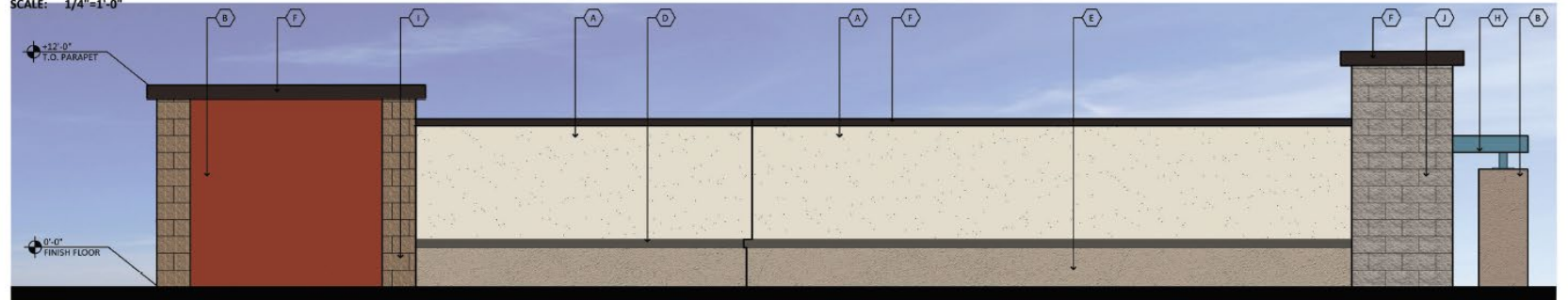
SCALE: 1/4"=1'-0"

SCALE: 1/4"=1'-0"



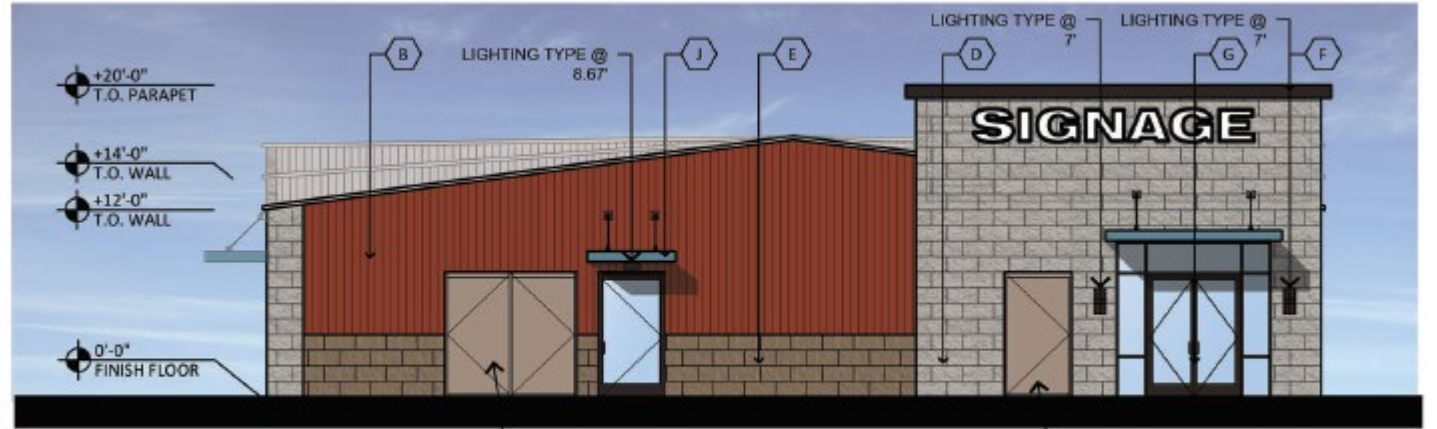
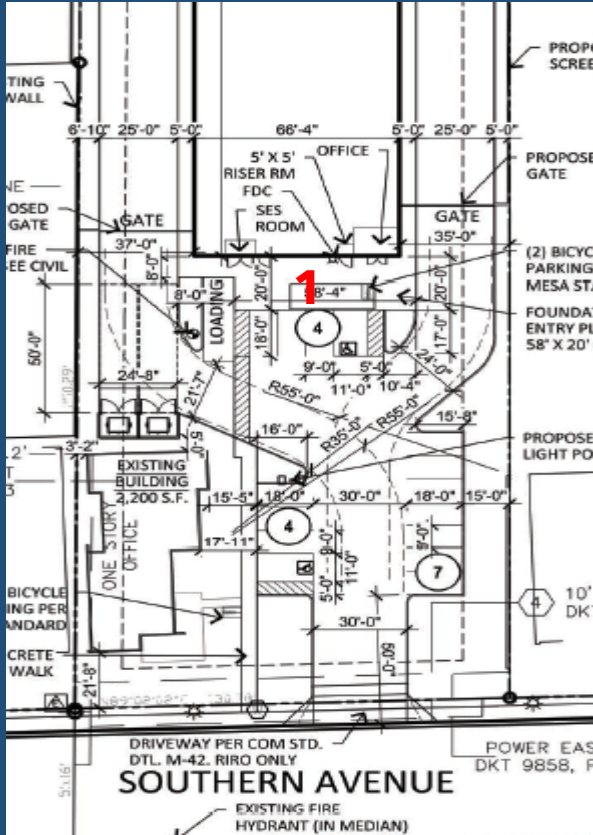
**PROPOSED NORTH ELEVATION**

SCALE: 1/4"=1'-0"



**PROPOSED WEST ELEVATION**

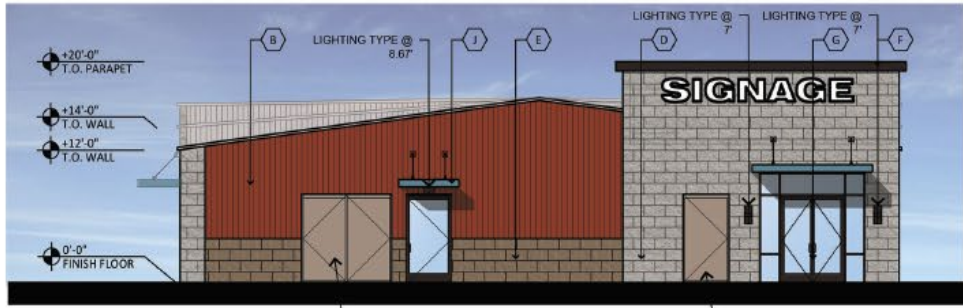
# Elevations



**SOUTH ELEVATION 1**

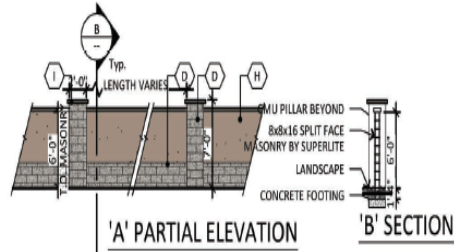
SCALE: 1/8"=1'-0"





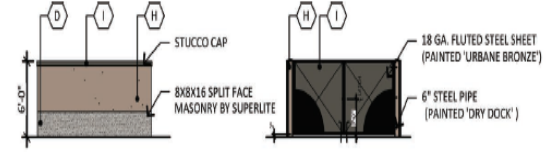
**SOUTH ELEVATION**

SCALE: 1/8"=1'-0"



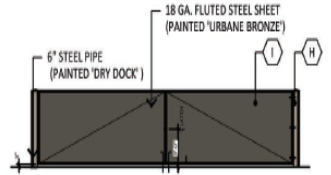
**SCREEN WALL TYPE**

SCALE: 1/8"=1'-0"



**TRASH ENCLOSURE TYPE**

SCALE: 1/8"=1'-0"



**GATE TYPE**

SCALE: 1/8"=1'-0"



**PARTIAL WEST ELEVATION**

SCALE: 1/8"=1'-0"





### NORTH ELEVATION

SCALE: 1/8"=1'-0"



- |   |   |  |
|---|---|--|
| ▽ MFG: JANUS INTERNATIONAL<br>COLOR: SANDSTONE  | ▽ MFG: SUPERLITE<br>COLOR: MALIBU SANDS<br>FINISH: SPLIT FACE                     | ▽ MFG: ATAS<br>COLOR: CLASSIC I  |
| ⬡ B ROLL UP DOOR/METAL PANELS<br>PAINTED:<br>MFG: SHERWIN WILLIAMS<br>COLOR: SIERRA REDWOOD<br>SPEC: SW7598 | ⬡ E 8X8X16 MASONRY:<br>MFG: SUPERLITE<br>COLOR: UMBER BROWN<br>FINISH: SPLIT FACE | ⬡ H PAINTED STUCCO:<br>MFG: SHERWIN<br>COLOR: DRY DOC<br>SPEC: SW7502<br>TEXTURE: SMOOTH |
| ⬡ C PAINTED STUCCO:<br>MFR: SHERWIN WILLIAMS<br>COLOR: NATURAL GROUND<br>SPEC: SW7568<br>TEXTURE: SAND      | ⬡ F METAL COPING:<br>MFR: ATAS<br>COLOR: CLASSIC BRONZE                           | ⬡ I PAINTED STUCCO:<br>MFG: SHERWIN<br>COLOR: URBANE<br>SPEC: SW7048                     |



### PARTIAL EAST ELEVATION

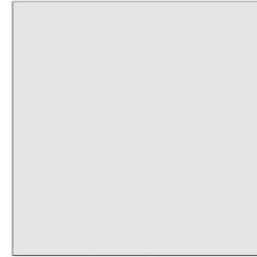
SCALE: 1/8"=1'-0"



# Colors & Materials



**"R" METAL PANEL:**  
MFG: JANUS INTERNATIONAL  
COLOR: SANDSTONE



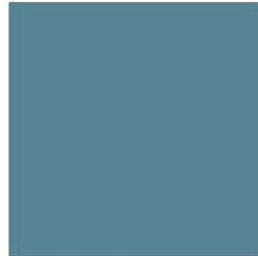
**SMOOTH METAL PANEL:**  
MFR: JANUS INTERNATIONAL  
COLOR: SATIN WHITE



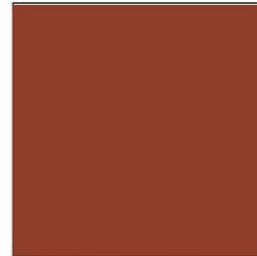
**8X8X16 MASONRY:**  
MFG: SUPERLITE  
COLOR: UMBER BROWN  
FINISH: SPLIT FACE



**8X8X16 MASONRY:**  
MFG: SUPERLITE  
COLOR: MALIBU SANDS  
FINISH: SPLIT FACE



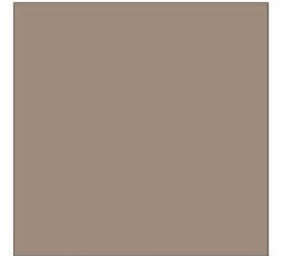
**METAL TRELLIS:**  
MFR: ATAS  
COLOR: SLATE BLUE



**PAINTED STUCCO/METAL:**  
MFG: SHERWIN WILLIAMS  
COLOR: SIERRA REDWOOD  
SPEC: SW7598  
TEXTURE: SMOOTH



**PAINTED STUCCO:**  
MFG: SHERWIN WILLIAMS  
COLOR: TONY TAUPE  
SPEC: SW7038  
TEXTURE: SAND



**PAINTED STUCCO:**  
MFG: SHERWIN WILLIAMS  
COLOR: DRY DOCK  
SPEC: SW7502  
TEXTURE: SMOOTH



**PAINTED STUCCO:**  
MFG: SHERWIN WILLIAMS  
COLOR: NEUTRAL GROUND  
SPEC: SW7568  
TEXTURE: SAND



**PAINTED STUCCO:**  
MFG: SHERWIN WILLIAMS  
COLOR: URBANE BRONZE  
SPEC: SW7048  
TEXTURE: SMOOTH



**METAL COPING/MULLION:**  
MFR: ATAS  
COLOR: CLASSIC BRONZE

# Lighting

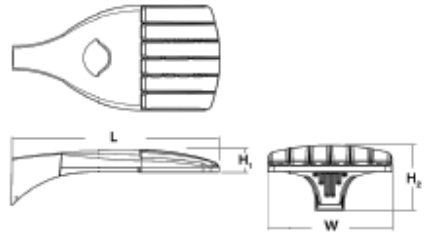


## D-Series Size 0 LED Area Luminaire



### Specifications

EPA: 0.95 ft<sup>2</sup> (0.09)  
 Length: 26" (0.0-0)  
 Width: 13" (0.0-0)  
 Height: 3" (0.0-0)  
 Height: 7" (0.0-0)  
 Weight (max): 16 lbs (0.29)



An Capable options indicated by this color background.

### Ordering Information

EXAMPLE: DSX0 LED P6



## D-Series Size 1 LED Wall Luminaire



d<sup>2</sup>series

### Specifications Luminaire

Width: 13-3/4" (04.9 ord)  
 Depth: 10" (05.4 ord)  
 Height: 6-3/8" (16.2 ord)

### Back Box (BBW, ELCW)

Width: 13-3/4" (04.9 ord)  
 Depth: 4" (10.2 ord)  
 Height: 6-3/8" (16.2 ord)



### Ordering Information

DSXW1 LED			
-----------	--	--	--

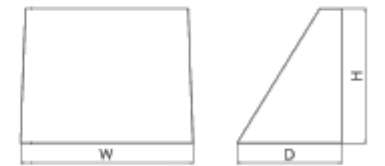


## WEDGE2 LED Architectural Wall Sconce



### Specifications

Depth: 7"  
 Height: 9"  
 Width: 11.5"  
 Weight (without options): 13.5 lbs



## 7601 LED

### STANDARD SPECIFICATIONS

**FRAME**  
 Heavy duty aluminum with roll formed aluminum bands. The optional trimbars are solid 0.250" thick aluminum, held in place by fasteners.

**DIFFUSER**  
 Translucent, UV stabilized, white acrylic. Diffuser is form molded allowing for a uniform standard thickness of 0.100" throughout.

**FIN**  
 Heavy duty formed aluminum, featuring thread inserts to prevent rusting of fasteners.

**LED PERFORMANCE - 3500K STANDARD**  
 120-277V - 3500K, 82 CRI - L80 rating - 60,000 hrs - L70 rating (projected) - 100,000 hrs  
 Amperage rated @ 110V input  
 Operating ambient temperature: -20°C / -4°F - 40°C / 104°F

Delivered 3500K lumens noted. Consult Brownlee.com for performance of all CCTs.  
 B05 - 6W nominal, .05 A input - 484 lm, Non-dimming.  
 B12 - 12W nominal, .10 A input - 957 lm, Dimmable (0-10V).  
 C09 - 9W nominal, .10 A input - 675 lm, Dimmable (0-10V).  
 C17 - 16W nominal, .15 A input - 1594 lm, Dimmable (0-10V).  
 C24 - 23W nominal, .20 A input - 2186 lm, Dimmable (0-10V).

**MOUNTING**  
 Directly to j-box (by others). Mounting hardware included.

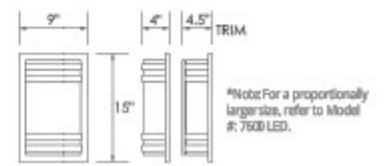
**FINISH**  
 All 7601 parts are prepared using a three step pre-treatment/sealing process, followed by a powder coat primer prior to applying any of the Brownlee paint finishes.

**WARRANTY**  
 See below warranty on the LED product. Contact factory for details.

PROJECT:	
MODEL #:	
FIXTURE TYPE:	'SF/SFE'



NT finish, V80 trim



\*Note: For a proportionally larger size, refer to Model #: 7600 LED.

# Design Guidelines

## Section 11-6-3

- |   |  |
|---|--|
| ✓ | Exterior walls are proportioned to human scale |
| ✓ | Varied building height                         |
| ✓ | Primary building entries                       |

# Summary

## Findings

- ✓ Staff has no major concerns
- ✓ Project meets MZO requirements
- ✓ Staff welcomes any feedback